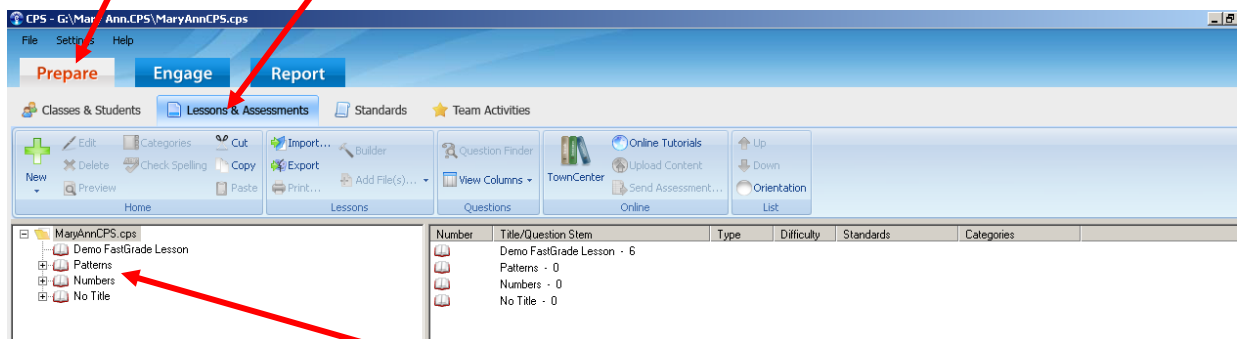
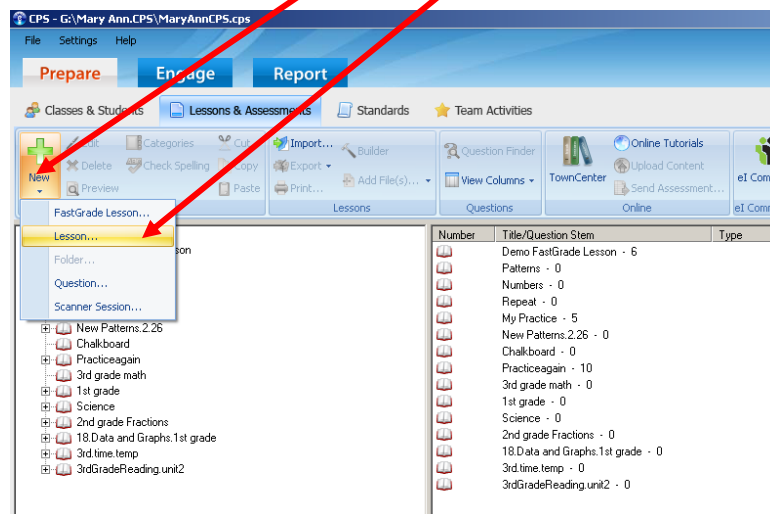


**To add an ExamView Assessment (Test) to a CPS lesson:**  
*(Use your ExamView Instructions to create question/test banks before you begin here.)*

Under the **Prepare** tab, select **Lessons & Assessments**.

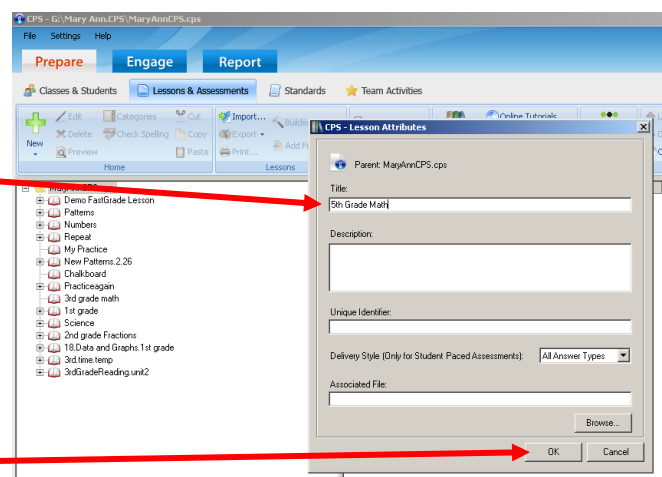


Either select a lesson that has been previously setup or add a **New Lesson**:



**Adding a Lesson:**

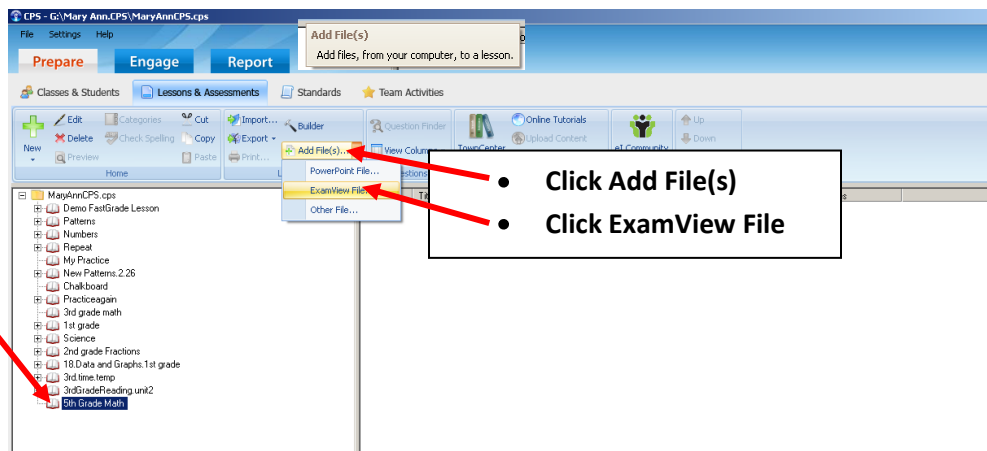
**Give the lesson a name.**  
(5<sup>th</sup> Grade Math)



**Click OK.**

Now you are ready to Add a File (PowerPoint, ExamView, Other) to the lesson you selected or added.

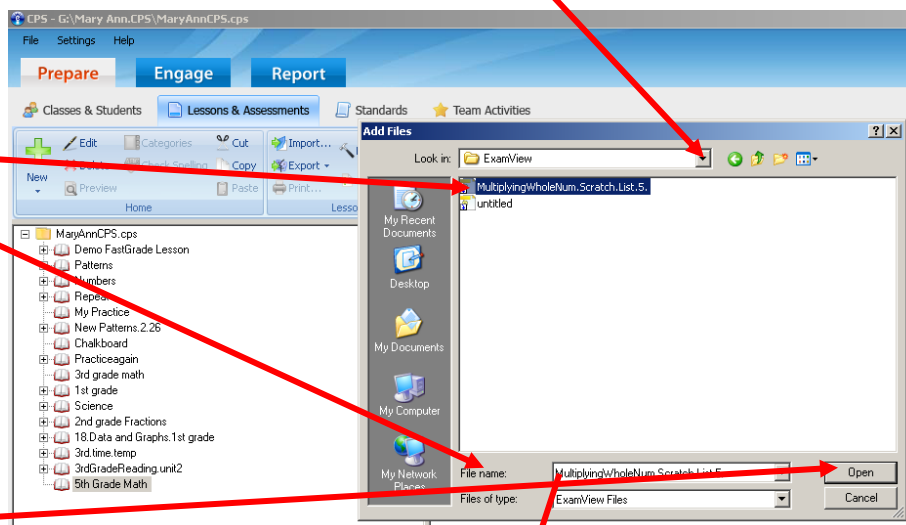
- Highlight the lesson where you want to add the test file.



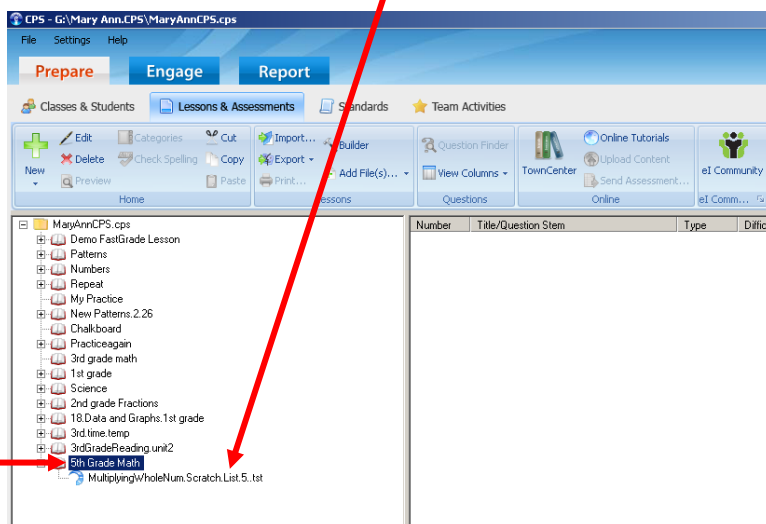
Navigate to where you saved the assessment (test) file you want to add.

Highlight the test you want to add.

Click Open.

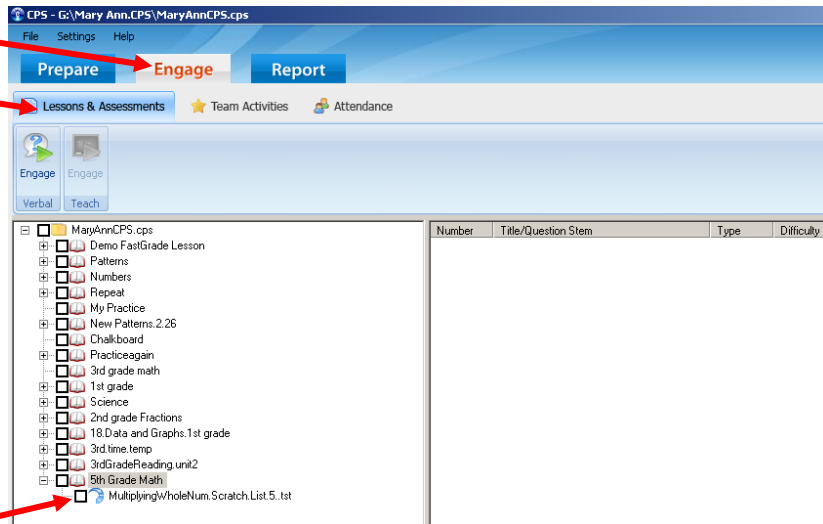


Test is added in lesson you highlighted.



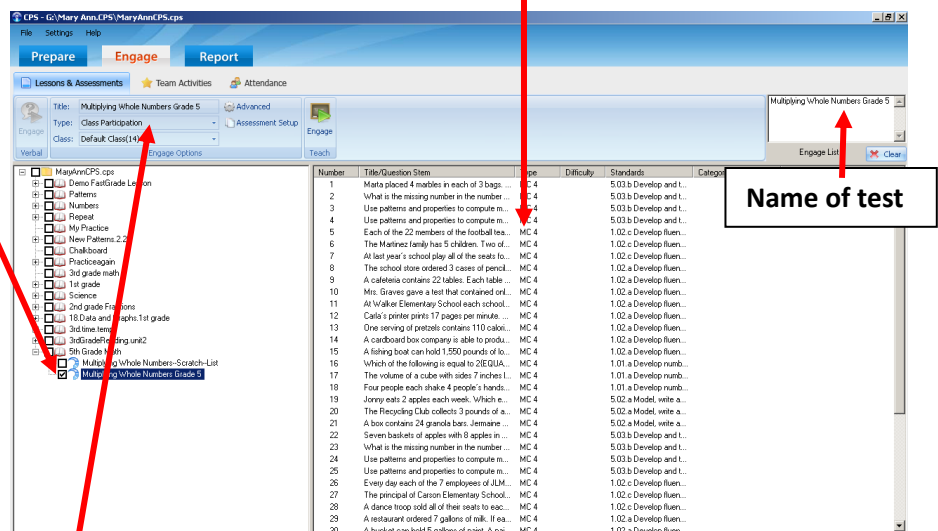
Now you are ready to use the CPS system with your students:

- Select Engage tab
- Lessons & Assessments



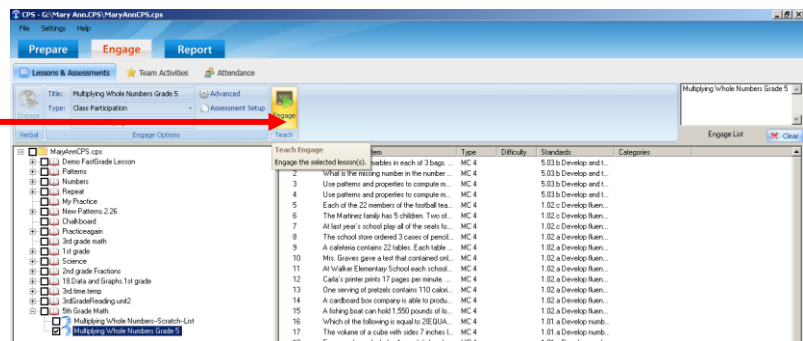
Put a ✓ in the box by the test you want to use.

Questions in test appear here after the ✓ is entered:

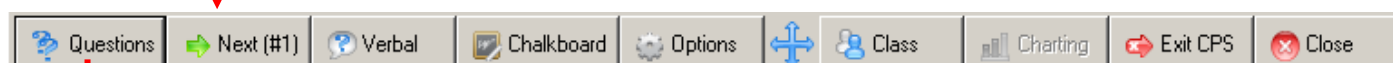


Changes may be made to choices in this area.

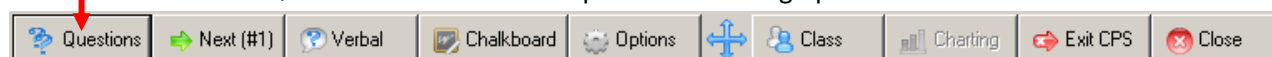
With the assessment you are going to use selected, click the Engage button.



The **Engage Toolbar** will be on your screen.



Questions will show in the process of setting up.



Select the question you want to use with your CPS system.

Multiplying Whole Numbers Grade 5

Questions 1 thru 20

Questions 21 thru 40

Questions 41 thru 42

1. Marta placed 4 marbles in each of 3 bags. Then she...

2. What is the missing number in the number sentence...

3. Use patterns and properties to compute mentally. ...

4. Use patterns and properties to compute mentally. ...

5. Each of the 22 members of the football team is req...

6. The Martinez family has 5 children. Two of the chi...

7. At last year's school play all of the seats for ea...

8. The school store ordered 3 cases of pencils. If ea...

9. A cafeteria contains 22 tables. Each table can sea...

10. Mrs. Graves gave a test that contained only 3 prob...

11. At Walker Elementary School each school bus is ass...

12. Carla's printer prints 17 pages per minute. At tha...

13. One serving of pretzels contains 110 calories. The...

14. A cardboard box company is able to produce 1,250 p...

15. A fishing boat can hold 1,550 pounds of lobster. T...

16. Which of the following is equal to 2{EQUATION}?

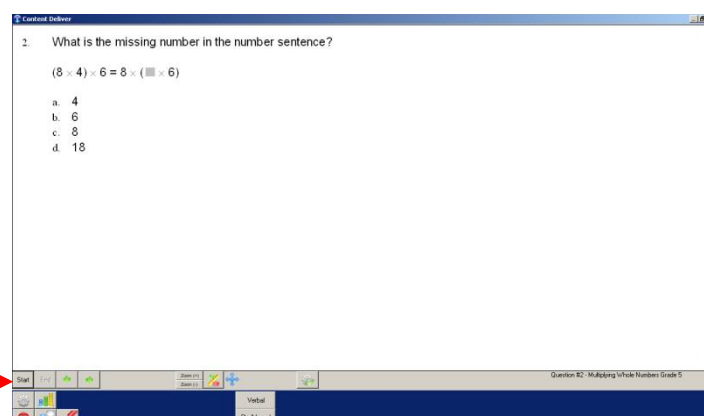
17. The volume of a cube with sides 7 inches long is 7...

18. Four people each shake 4 people's hands. Each of t...

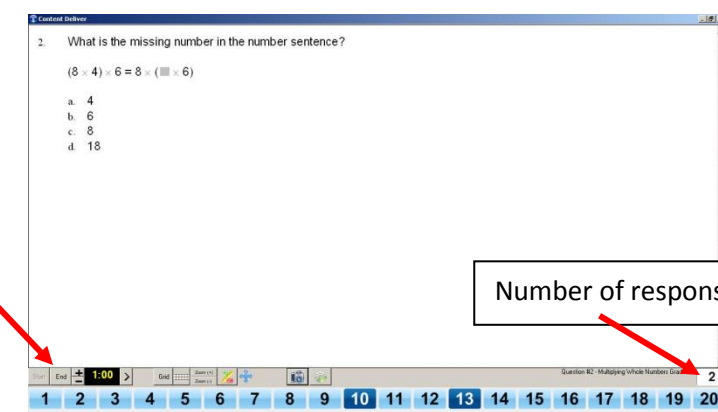
19. Jonny eats 2 apples each week. Which equation can ...

20. The Recycling Club collects 3 pounds of aluminum e...

Click **Start** to activate student responses.

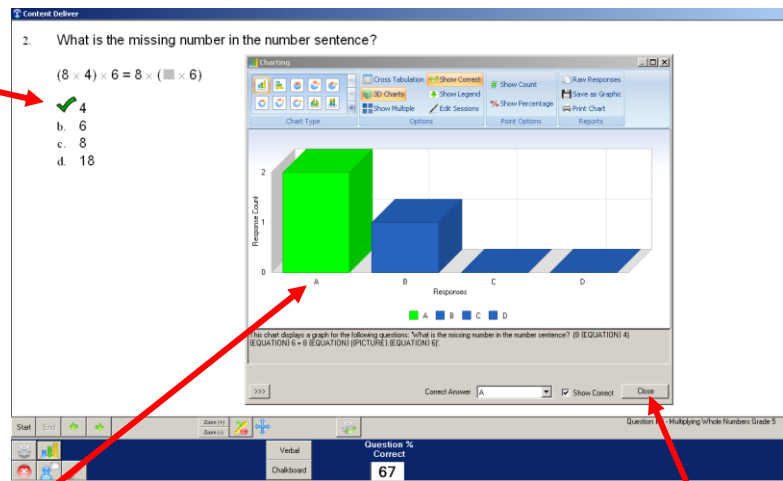


When all students have responded, click **End** for correct answer to be displayed.

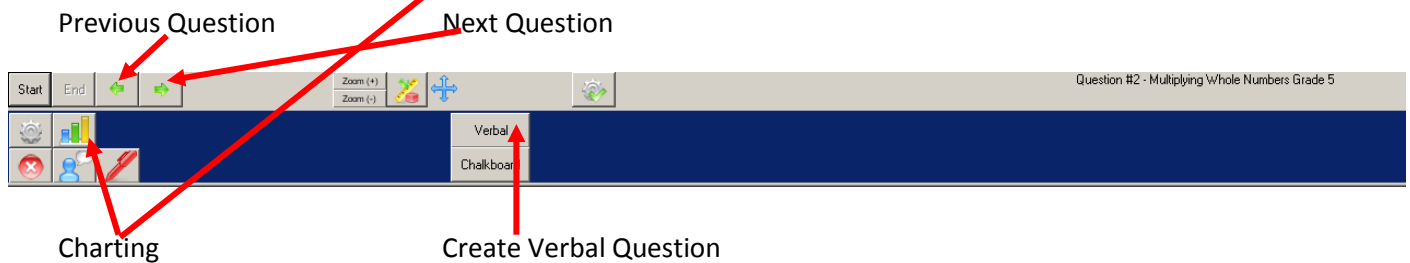


Number of responses

Screen with answer displayed



Click **Close** to continue to next question.



## Online Helps

[http://www.einstruction.com/support\\_downloads/training/resources/index.html](http://www.einstruction.com/support_downloads/training/resources/index.html)

Customer Support Phone Number: (888) 333-4988